

# Eco-SOL MAX Ink Quick Conversion Guide

## Color Choice Version

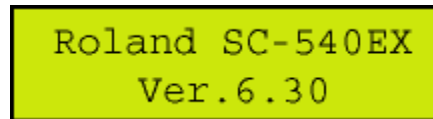
Please note that these steps pertain to specific Roland units. If you do not have a SC-500, SJ-500 or SJ-600 unit please refer to [www.rolanddga.com](http://www.rolanddga.com) for the correct guide.

### Overview

1. Check the firmware version of the printer.
2. Update the firmware on the printer with the Roland Firmware Updater Application
3. Convert the unit to Eco-SOL MAX inks.
4. Download Eco-SOL MAX ICC profiles from the Roland DGA website

### 1. Check the firmware version of the printer.

1. Turn on the printer's Main Power Switch.
2. When turn on the Sub Power Switch of the printer, firmware version of the printer is displayed on the display panel.



Firmware versions required to run Eco-SOL MAX inks:

Model Name	Required Firmware
SJ-500 SJ-600	Ver.5.3 and above
SC-500	Ver.4.3 and above

### 2. Update the firmware on the printer with the Roland Firmware Updater Application

The following steps will allow you to perform a firmware update with the Roland Firmware Updater Application. It is important you complete each step in sequence to ensure proper installation.

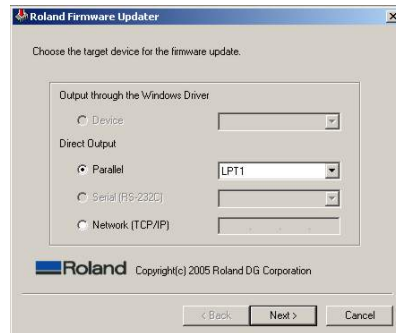
#### Prerequisites

1. Make sure that you have a connection between the computer and the printer. This solution will work with a parallel or network connection. Parallel cords should not be longer than 10ft.
1. Make sure you have downloaded the current firmware updater application from the Roland DGA website. This application is posted in the support section of the Roland DGA website in .zip format and will need to be extracted before it is ready to use.

#### Performing Firmware Update

1. Turn the **main power** of the unit on. (This power switch will be located near the power cord.)
2. Hold down the **Up**, **Left** and **Down** arrow keys while pressing the **sub-power** button to enter the Firmware Updating mode. (The sub power button is found on the front panel of the printer.)
3. The printer will display “**version up sure?**” or “**are you sure?**” press the **Enter** key to continue.
4. The display will then read “**waiting**” indicating it is ready to receive firmware.
5. Launch the **Roland Firmware Updater** application.

- You must select to use the **Parallel** or if this unit has a TCP/IP converter, **Network (TCP/IP)** connection.



- If the **Network (TCP/IP)** connection is being used, enter the units TCP/IP address and then click **“Next”**.
- Click **“Next”**
- Click **“Yes”**
- The Roland Firmware Updater Application will start to transfer firmware to the unit.
- Click **“Finish”** to close the application.
- The Roland unit’s display will show **“erasing”** then **“writing”** and then **“complete”**.
- Once the display reads **“complete”** you may then power down the unit and restart it.
- Make sure when the printer powers back up to check the firmware version to confirm that it was completely installed.
- You have now completed the firmware update.

### 3. Converting the unit to Eco-SOL MAX inks:

The following steps will allow you to convert a Roland unit to EcoSOL MAX inks from EcoSOL or SOL inks. It is important you complete each step in sequence to ensure proper installation.

#### Prerequisites

- Make sure the Roland unit has the firmware version required to run Eco-SOL MAX inks.
- It is not possible to use Eco-SOL and Eco-SOL MAX inks in the same unit. You must convert all colors to Eco-SOL MAX. Please have the need Eco-SOL MAX cartridges ready.

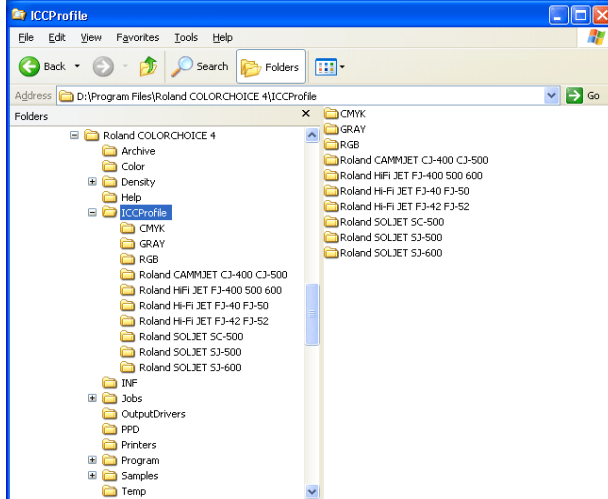
#### Performing the EcoSOL MAX Update

- Turn the **main power** of the unit on. (This power switch will be located near the power cord.)
- Turn on the units **sub-power**. (The **sub-power** button is found on the front panel of the printer.)
- Press the **“Menu”** button on the front panel to enter the users menu.
- Using the **Down** arrow key on the front panel, navigate the users menu until **“Ink Control”** is shown on the units display.
- Press the **Right** arrow to enter the **“Ink Control”** sub-menu.
- Using the down arrow key on the front panel, navigate the sub-menu until **“Change Ink Set”** is shown on the units display.
- Press the **Right** arrow key to enter the **“Change Ink Set”** sub-menu.
- Using the **Down** arrow, navigate the menu till **“E-Sol MAX LcLm”** is shown on the display.
- Press the **Enter** button to begin the ink switch process.
- The unit’s display will then walk the user through the needed steps complete the ink switch process. This process will take less than 5 minutes.
- Once the automatic ink switch procedure is finished, the unit will be ready to print.

#### 4. Downloading ICC profiles from the Roland DGA website.

Please follow this link to download the newest available ICC profiles from Roland DG  
<http://www.rolanddga.com/profiles/wizard>

1. Open the **ICC Profile** folder of **Roland ColorChoice**. Copy the downloaded ICC profiles for ECO-SOL MAX ink onto the folder of the name of the model that you are using.



2. Launch **Roland ColorChoice**.
3. Enter the **Setup → Setup Properties**
4. In the **Setup Properties** window, go to the **Print** tab.
5. In the Media select **Other**
6. Select the ICC profile you wish to use in the **ICC Output Profile → Profile**.
7. **Roland ColorChoice** will now be ready to use.