

Eco-SOL MAX Ink Quick Conversion Guide

ColorIP Version

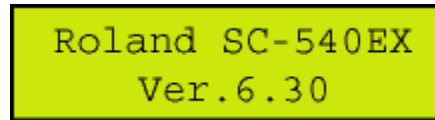
Please note that these steps pertain to specific Roland units. If you do not have a SP-300, SC-540 SC-540EX, SJ-640, SJ-640EX, SJ-740, SJ-740EX or SJ-1000 unit please refer to www.rolanddga.com for the correct guide.

Overview:

1. Check the firmware version of the printer.
2. Update the firmware on the printer with the Roland Firmware Updater Application
3. Converting the unit to Eco-SOL MAX inks.
4. Download Eco-SOL MAX ICC profiles from the Roland DGA website.

1. Check the firmware version of the printer.

1. Turn on the printer's Main Power Switch.
2. When turn on the Sub Power Switch of the printer, firmware version of the printer is displayed on the display panel.



Firmware versions required to run Eco-SOL MAX inks:

Model Name	Required Firmware
SP-300	Ver.5.90 and above
SJ-740EX SJ-640EX SJ-740 SC-540 SC-540EX	Ver.6.60 and above
SJ-1000	Ver.1.70 and above

2. Update the firmware on the printer with the Roland Firmware Updater Application

The following steps will allow you to perform a firmware update with the Roland Firmware Updater Application. It is important you complete each step in sequence to ensure proper installation.

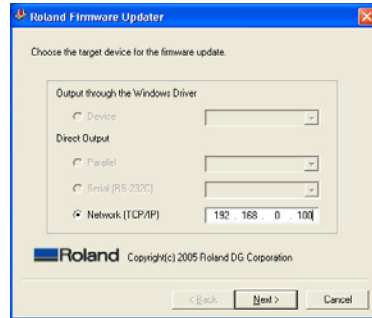
Prerequisites

1. Make sure you have downloaded the current Firmware Update Application from the Roland DGA website. This application is posted in the support section of the Roland DGA website and will need to be extracted before it is ready to use.

Performing Firmware Update

1. Turn the **main power** of the unit on. (This power switch will be located near the power cord.)
2. Hold down the **Up, Left** and **Down** arrow keys while pressing the **sub-power** button to enter the Firmware mode. (The sub power button is found on the front panel of the printer.)

3. The printer will display “**version up sure?**” or “**are you sure?**” press the **Enter** key to continue.
4. The display will then read “**waiting**” indicating it is ready to receive firmware.
5. Launch the **Roland Firmware Updater** application.
6. Enter the units TCP/IP address and then click “**Next**”. If this is a SP-300 or SP-300V unit, select SP-300 in the menu next to the option to “Output through a Windows Driver”.



7. Click “**Next**”
8. Click “**Yes**”
9. The Roland Firmware Updater Application will start to transfer firmware to the unit.
10. Click “**Finish**” to close the application.
11. The Roland unit’s display will show “**erasing**” then “**writing**” and then “**complete**”.
12. Once the display reads “**complete**” you may then power down the unit and restart it.
13. Make sure when the printer powers back up to check the firmware version to confirm that it was completely installed.
14. You have now completed the firmware update.

3. Convert the unit to Eco-SOL MAX inks:

The following steps will allow you to convert a Roland unit to Eco-SOL MAX inks from Eco-SOL or SOL inks. It is important you complete each step in sequence to ensure proper installation.

Prerequisites

1. Make sure the Roland unit has the firmware version required to run Eco-SOL MAX inks.
2. It is not possible to use Eco-SOL and Eco-SOL MAX inks in the same unit. You must convert all colors to Eco-SOL MAX. Please have the need Eco-SOL MAX cartridges ready.

Performing the EcoSOL MAX Update

1. Turn the **main power** of the unit on. (This power switch will be located near the power cord.)
2. Turn on the units **sub-power**. (The **sub-power** button is found on the front panel of the printer.)
3. Press the “**Menu**” button on the front panel to enter the users menu.
4. Using the **Down** arrow key on the front panel, navigate the users menu until “**Ink Control**” is shown on the units display.
5. Press the **Right** arrow to enter the “**Ink Control**” sub-menu.
6. Using the down arrow key on the front panel, navigate the sub-menu until “**Change Ink Set**” is shown on the units display.
7. Press the **Right** arrow key to enter the “**Change Ink Set**” sub-menu.
8. Using the **Down** arrow, navigate the menu till “**E-Sol MAX 4Color**” is shown on the display.

* The display will be different depending on the unit model and ink set type.

9. Press the **Enter** button to begin the ink switch process.

10. The unit's display will then walk the user through the needed steps complete the ink switch process. This process will take less than 5 minutes.
11. Once the automatic ink switch procedure is finished, the unit will be ready to print.

4. Downloading ICC profiles from the Roland DGA website.

Please follow this link to download the newest available ICC profiles from Roland DGA.

<http://www.rolanddga.com/profiles/wizard>